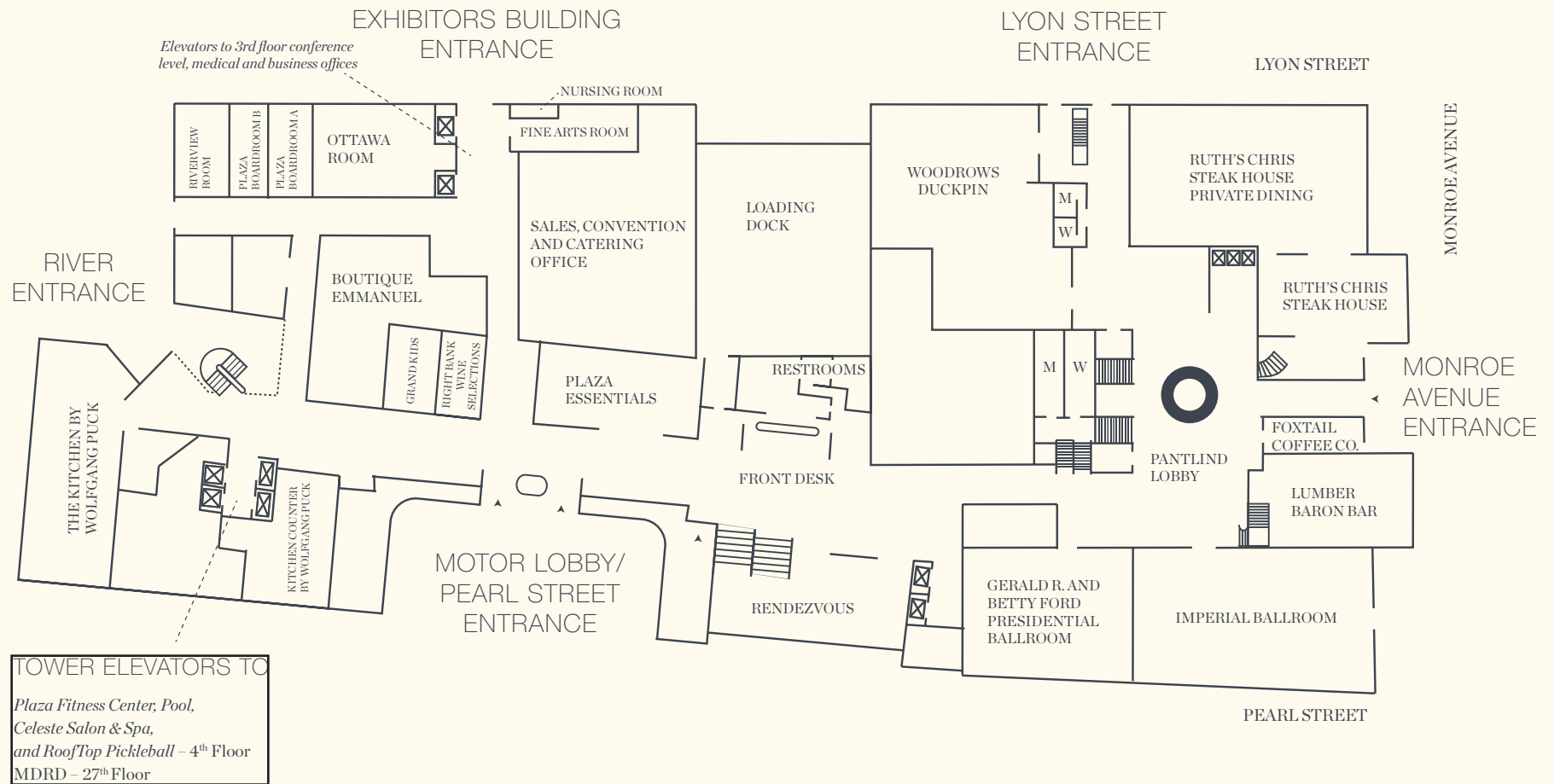




# FLOOR PLANS

# LOBBY LEVEL

## FIRST FLOOR





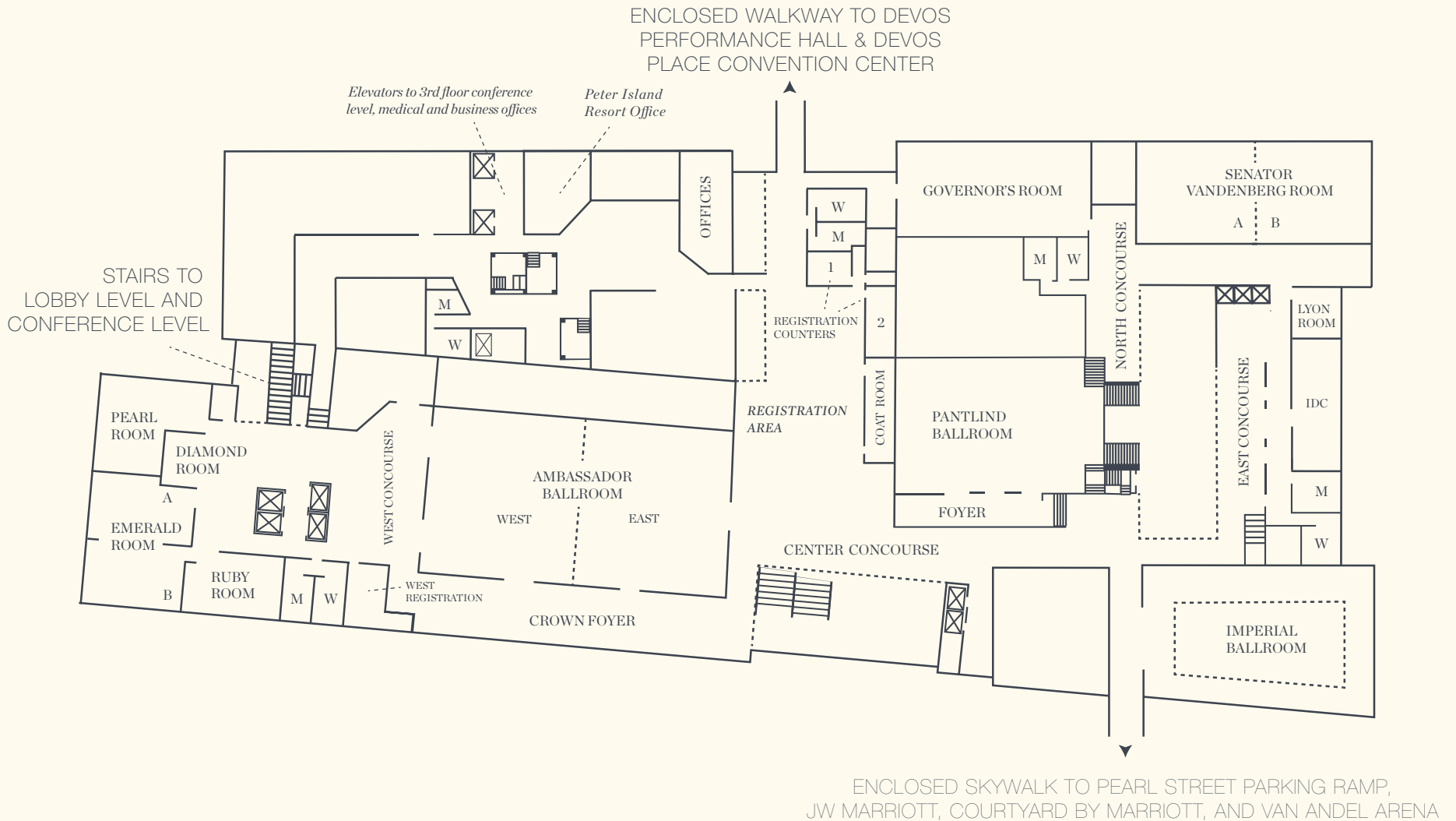
HISTORIC PANTLIND LOBBY

LOBBY LEVEL—1<sup>ST</sup> FLOOR

	<i>Dimension (l' x w')</i>	<i>Ceiling Height</i>	<i>Square Footage</i>	<i>Theater Style</i>	<i>Classroom</i>	<i>Reception (standing)</i>	<i>Banquet (tables for 10)</i>
FINE ARTS ROOM	28x16	8.5	448	NA	NA	NA	NA
GERALD R. FORD AND BETTY FORD PRESIDENTIAL BALLROOM	45x45	20	2,025	220	130	250	160
IMPERIAL BALLROOM (Main)	56x55	8–30	3,300	190	100	300	180
IMPERIAL BALLROOM (Mezzanine)	56x10–15	15	1,800	NA	NA	80	60
PLAZA BOARDROOM A	29x14	8.5	406	38	23	38	30
PLAZA BOARDROOM B	18x13	8.5	324	15	8	15	10
OTTAWA ROOM	29x38	8.5	1,100	72	36	125	70
RIVERVIEW ROOM	29x17	8.5	493	48	30	50	40

# CONCOURSE LEVEL

## SECOND FLOOR



	<i>Dimension (l' x w')</i>	<i>Ceiling Height</i>	<i>Square Footage</i>	<i>Theater Style</i>	<i>Classroom</i>	<i>Reception (standing)</i>	<i>Banquet (tables for 10)</i>
<b>CONCOURSE LEVEL – 2<sup>ND</sup> FLOOR</b>							
AMBASSADOR BALLROOM	125x70	16	8,750	1,100	600	1,150	720
AMBASSADOR BALLROOM WEST	62x70	16	4,375	500	260	550	350
AMBASSADOR BALLROOM EAST	62x70	16	4,375	500	260	550	350
DIAMOND ROOM	19x15	10	292	NA	NA	NA	10
EMERALD ROOM	57x37	9	2,138	220	120	224	150
EMERALD ROOM A	24x37	9	900	90	48	100	70
EMERALD ROOM B	33x37	9	1,238	100	56	100	70
GOVERNOR'S ROOM	79x37	10	2,923	270	168	325	210
LYON ROOM	18x16	9	296	16	12	35	10
PANTLIND BALLROOM	75x46	35	3,450	400	224	500	290
PANTLIND FOYER	45x13	8	585	NA	NA	70	40
PEARL ROOM	38x29	10	1,132	110	58	110	60
RUBY ROOM	32x19	10	625	40	31	50	30
SENATOR VANDENBERG ROOM	94x35	10	3,290	290	187	350	230
SENATOR VANDENBERG ROOM A	47x35	10	1,645	140	74	175	100
SENATOR VANDENBERG ROOM B	47x35	10	1,645	140	74	175	100

	<i>Dimension (l' x w')</i>	<i>Ceiling Height</i>	<i>Square Footage</i>	<i>Reception Capacity</i>
<b>CONCOURSE/FOYER AREAS – 2<sup>ND</sup> FLOOR</b>				
CENTER CONCOURSE (Ambassador Ballroom East)	95x55	18	5,225	700
CROWN FOYER (Ambassador Ballroom)	125x27	16	3,437	500
EAST CONCOURSE (Pantlind Ballroom)	93x19	12	1,767	200
NORTH CONCOURSE (Governor's Room & Vandenberg Room)	62x21	10	1,302	100
CENTER CONCOURSE REGISTRATION AREA (2 lockable registration counters, separate offices, and coat room/storage)		10		NA

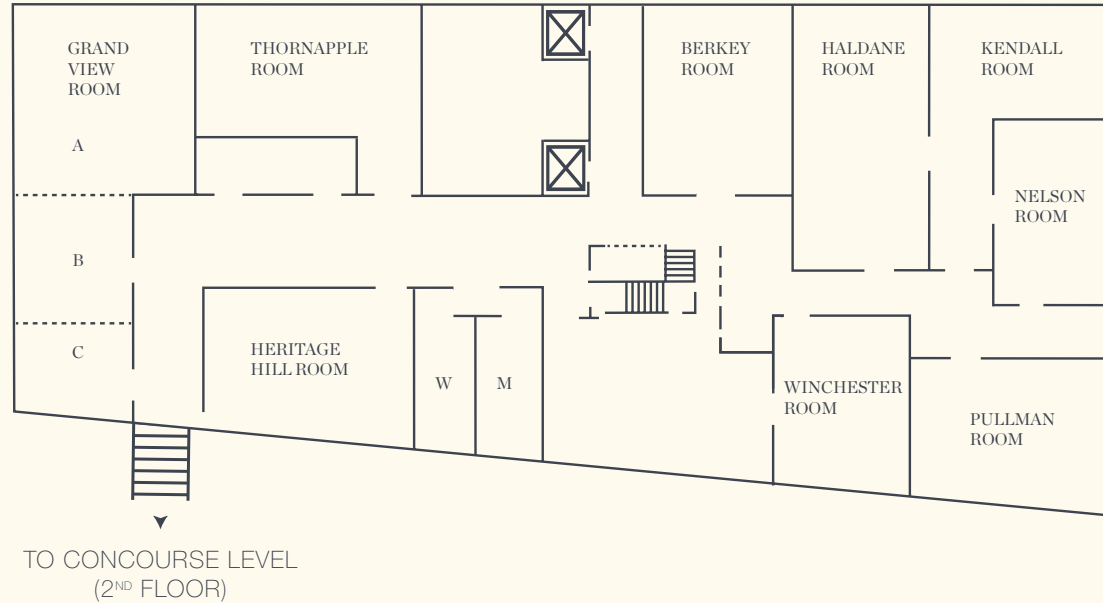
Average dimension; non parallel walls. Reception and registration areas are adjacent to and connect with the banquet and meeting rooms in parentheses.



**WEST CONCOURSE**

# CONFERENCE LEVEL

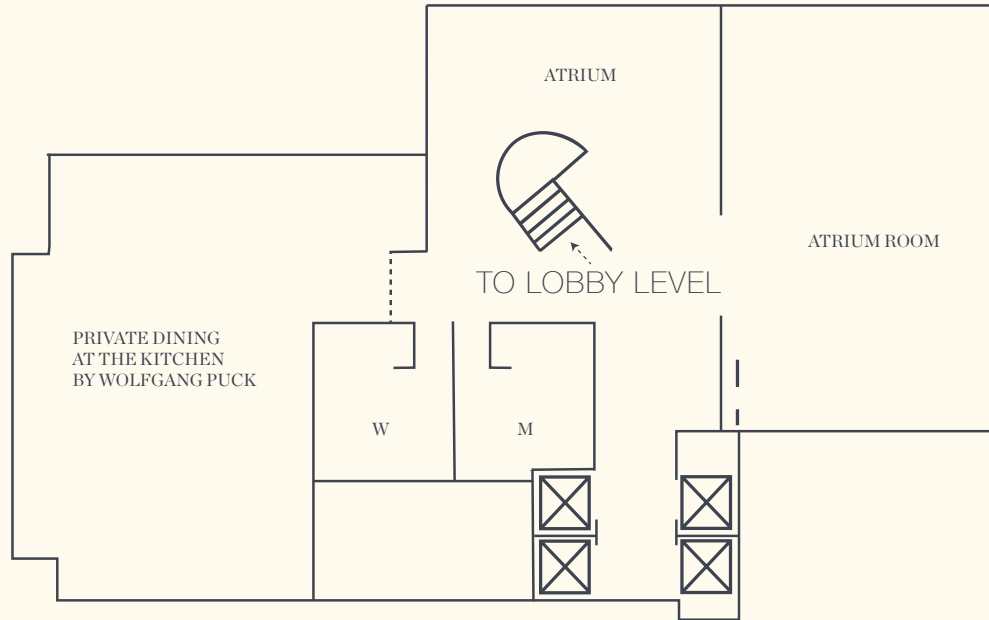
## THIRD FLOOR



	Dimension (l' x w')	Ceiling Height	Square Footage	Theater Style	Classroom	Reception (standing)	Banquet (tables for 10)
CONFERENCE LEVEL—3 <sup>RD</sup> FLOOR							
BERKEY ROOM	35x26	8.5	910	62	40	115	60
GRAND VIEW ROOM	78x23	8.5	1,821	165	96	225	130
GRAND VIEW ROOM A	36x26	8.5	940	80	48	115	60
GRAND VIEW ROOM B	23x22	8.5	506	45	24	60	30
GRAND VIEW ROOM C	17x22	8.5	375	30	22	45	20
HALDANE ROOM	47x25	8.5	1,175	100	54	150	80
HERITAGE HILL ROOM	40x30	8.5	1,220	65	42	125	70
KENDALL ROOM	34x30	8.5	1,165	60	40	130	70
NELSON ROOM	33x24	8.5	792	58	40	100	60
PULLMAN ROOM	22x16	8.5	385	36	21	50	30
THORNAPPLE ROOM	41x24	9	1,005	80	48	90	70
WINCHESTER ROOM	25x24	8.5	701	50	35	90	50

# ATRIUM LEVEL

## LOWER LEVEL

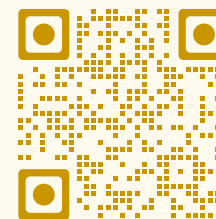


ATRIUM LEVEL—LOWER LEVEL							
	<i>Dimension (l' x w')</i>	<i>Ceiling Height</i>	<i>Square Footage</i>	<i>Theater Style</i>	<i>Classroom</i>	<i>Reception (standing)</i>	<i>Banquet (tables for 10)</i>
ATRIUM ROOM	54x37	9	1,998	220	130	250	150

WEST TOWER							
	<i>Dimension (l' x w')</i>	<i>Ceiling Height</i>	<i>Square Footage</i>	<i>Theater Style</i>	<i>Classroom</i>	<i>Reception (standing)</i>	<i>Banquet (tables for 10)</i>
26 <sup>TH</sup> FLOOR ROTUNDA	26x25	9	650	40	30	70	40

SCAN TO TOUR  
SPACES VIRTUALLY



 AMWAY GRAND PLAZA

AMWAY GRAND PLAZA, CURIO COLLECTION BY HILTON

187 MONROE AVE NW GRAND RAPIDS, MI 49503  
1.616.774.2000 | AMWAYGRAND.COM



@AMWAYGRANDPLAZA